



**AB-Cube**

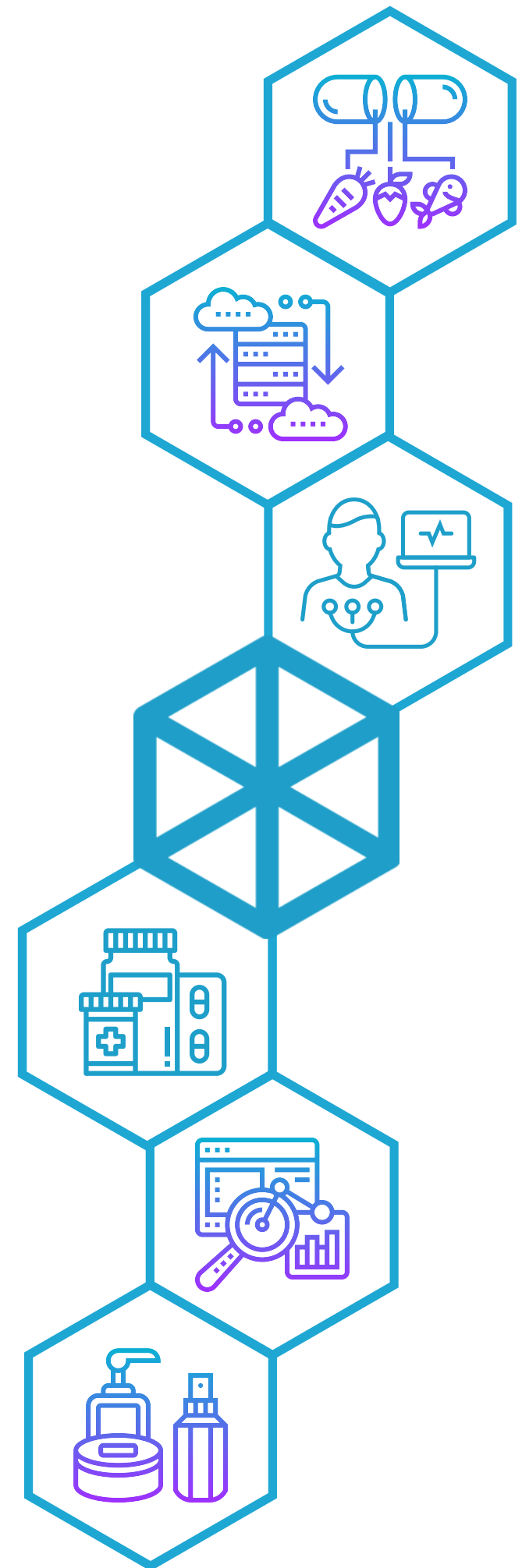
Making Safety Easy

## Making Safety Easy

Decoding SafetyEasy® Suite,  
multivigilance management solution

[contact@ab-cube.com](mailto:contact@ab-cube.com)

May 2021





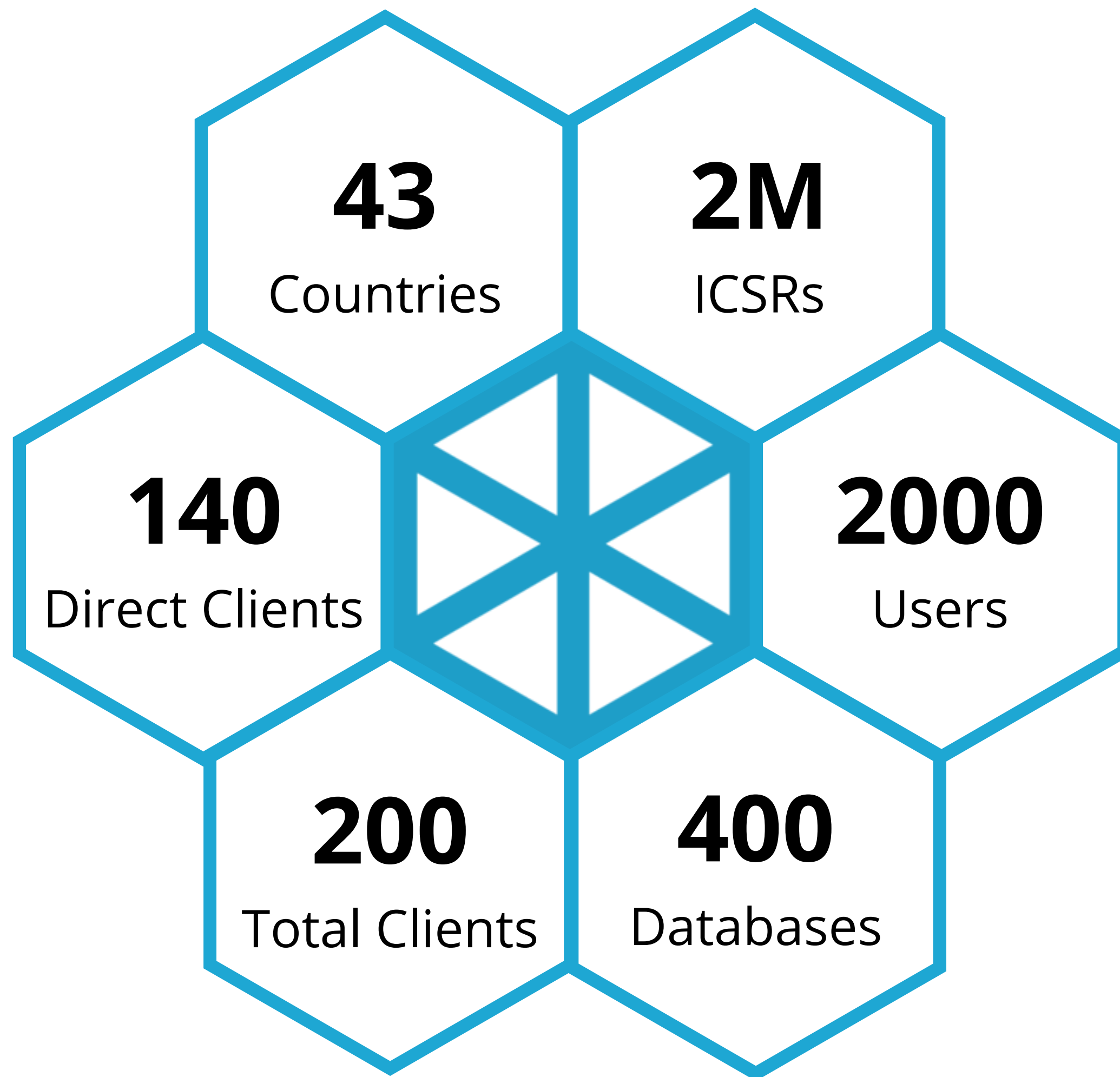
**AB-Cube**

Making Safety Easy

15 Years

towards

Making  
Safety  
Easy





**AB-Cube**  
Making Safety Easy

SafetyEasy® Suite

Multivigilance  
Management  
Solution

Making Multivigilance Easy





**AB-Cube**  
Making Safety Easy

# Tools

for Automation  
& Management



## iTAP Triage

Triage Automation Tool



## MigEasy

Internal Tool for Automated Migration



## SafetyEasy MI

Medical Information Management

# SafetyEasy® Suite - Terminology

## Vigilance

Univigilance platforms like SafetyEasy® PV, SafetyEasy® MD, CosmEthics®, SafetyEasy® Nutri, SafetyEasy® BV, SafetyEasy® OS

## Solution

SafetyEasy® Suite, the complete multivigilance management solution

OR

More than one database, e.g. SafetyEasy® PV + CosmEthics® = SafetyEasy® Suite

## Tools

SafetyEasy® MI, iTAP® - Triage, MigEasy® (Internal tool for automated migration)

## Environment

For CROs, each of their clients will have an environment to work on.  
Each environment may have vigilance or solution.



# We're Trusted by

L'ORÉAL

**ansm**  
Agence nationale de sécurité du médicament  
et des produits de santé

**VigiMedsafe**  
Pharmacovigilance and beyond

**ProductLife**  
GROUP

**CADILA**  
PHARMACEUTICALS  
LIMITED

**Air Liquide**  
HEALTHCARE

**Grndex**

**CLARINS**  
GROUPE

**PHARMINVENT**

**GPSC**  
Making progress for your health

**Universal Medica**  
A division of Universal Medica Group

**PHARMALEX**

**macopharma**  
DESIGNED FOR LIFE

**BIOCODEX**  
France

**STRAGEN**

**addmedica**

**Debiopharm Group**  
WE DEVELOP FOR PATIENTS

**VCLS**  
Voisin Consulting Life Sciences

**VIGIPHARM**  
La vigilance des produits de santé à votre service

**EXPANSCIENCE**  
LABORATOIRES

**mundi pharma**

**SERB**  
SPECIALTY PHARMACEUTICALS

**NORDIC**  
PHARMA

**Ethypharm**

**AXPHARMA**

**innothera**

**For rug**  
Consulting

**septodont**

**SYMOGEN**

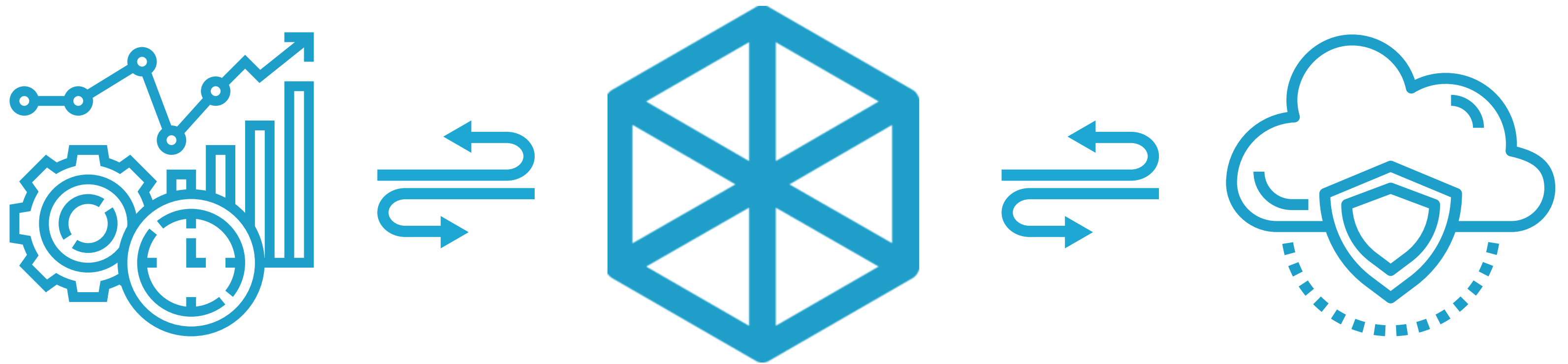
**viglyla**

**SMS**  
oncology

**SMB**  
Innovator in Galenics

**aixial**  
AN ALTEC COMPANY





# Pioneers of SaaS

Cloud-based vigilance database since 2006





## Secure

- Hosted by HDS compliant server
- 2 hours disaster recovery plan (DRP)
- Business continuity plan
- Regular intrusion tests



## Cloud

- Easily implemented in 2 weeks
- Private cloud available on demand
- Easily adopted with training & eLearning



## Compliant

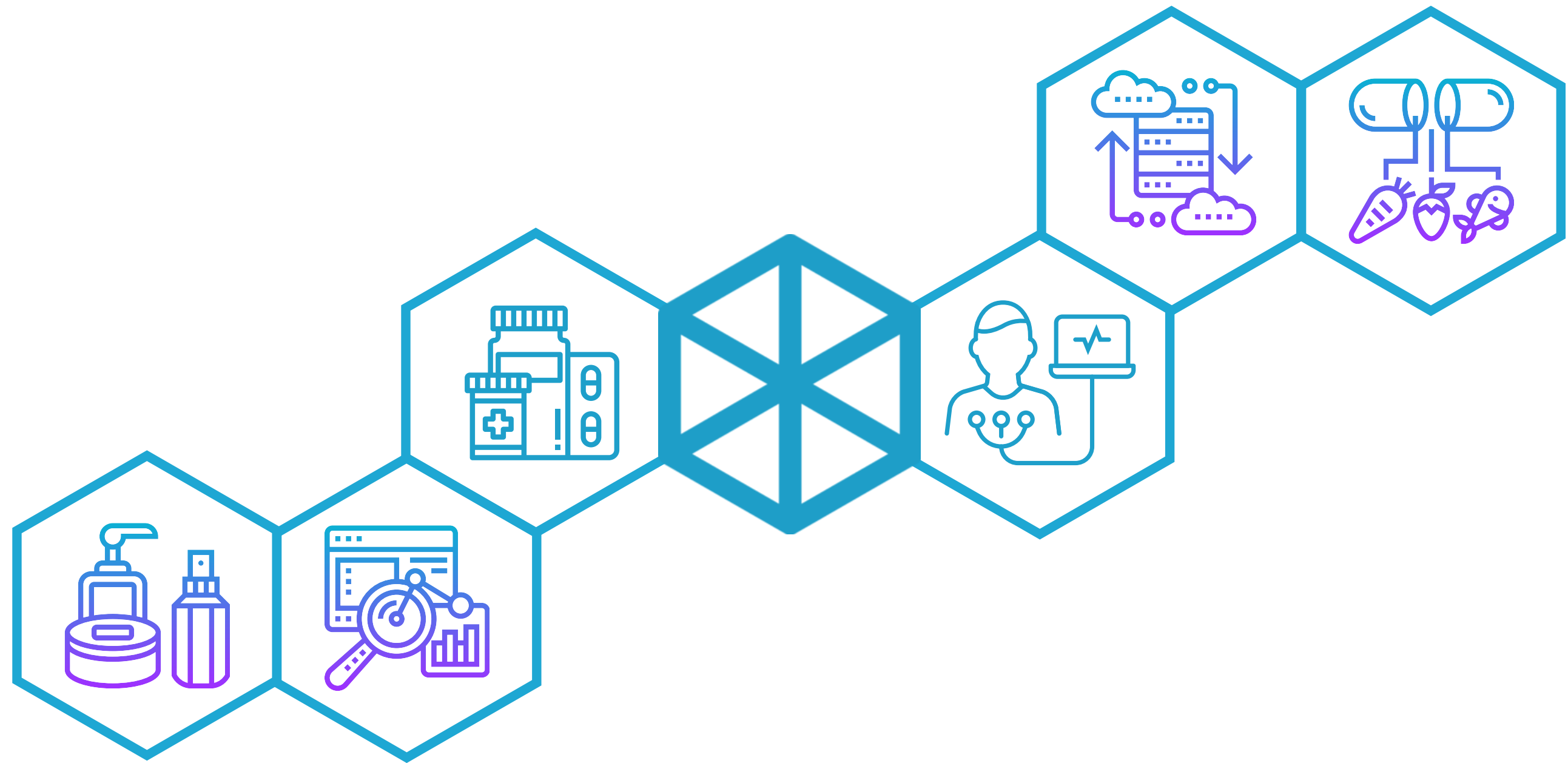
- Fully compliant (FDA 21 CFR part 11, EU GMP Annex 11)
- Full validation dossier (IQ, OQ, PQ), in line with GAMP 5



## Efficient

- Edit reports in the blink of an eye
- Increase efficiency of your global safety operations with faster and agile solution





# **SafetyEasy® Suite**

Making Multivigilance Easy



Combination Products.

Multivigilance.

Global Compliance.



**AB-Cube**  
Making Safety Easy

## SafetyEasy® Suite

### Multivigilance Management Solution

*Increase operational efficiency across the globe*

- Centralised database for all your products
- Advanced report generation: All cases related to a product with different regulatory status in different countries in a single report
- Faster data entry and case management: No double data entry and reconciliation
- Centralised search for data and cases
- Same level of automation for all families
- Only one validation dossier and one database to maintain



# **Seamless automation**

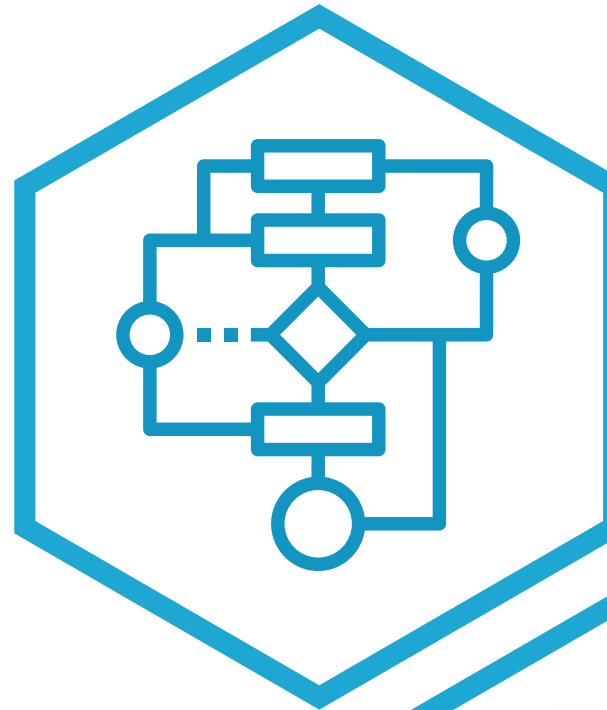
Integrates with your existing vigilance processes



Leverage the  
power of  
**Automation**



**AB-Cube**  
Making Safety Easy



## **Basic Automation**

Automated workflow management



## **Robotic Process**

Automated case intake, triage



## **Cognitive Automation**

Natural language processing linked with  
MedDRA and WHODD



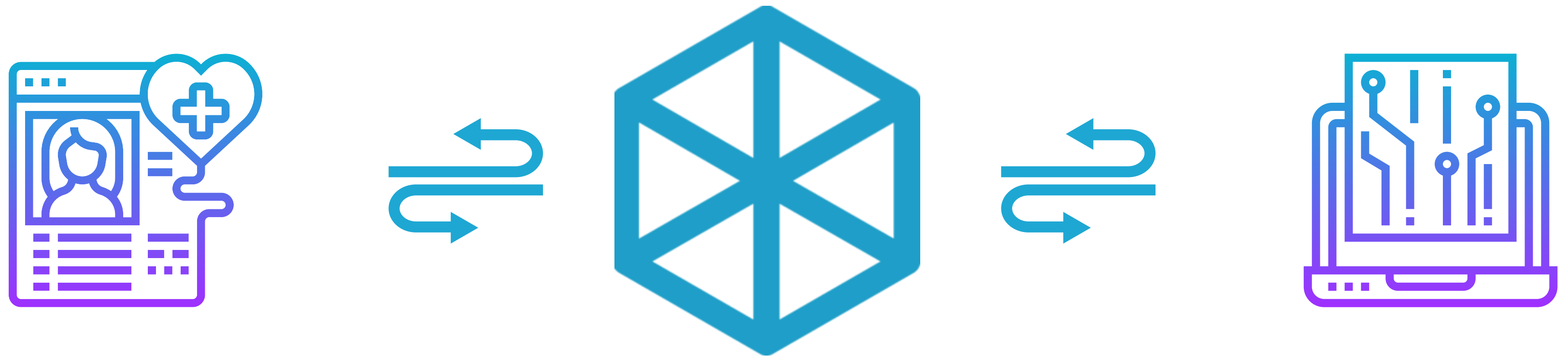
Quick & Compliant  
**Data Entry**

Safe, One Click  
**Submission**

Powerful &  
Customisable  
**Reporting**

# **3 Steps to Making Safety Easy**





We're making data privacy easy for healthcare

**SafetyEasy® MI**

Medical Information Management



# SafetyEasy® MI

Medical Information  
Management Software



**AB-Cube**  
Making Safety Easy

## What?

- Used as a hub to collect all the information one needs or is aware of.
- Helps capture and qualify a file of MI to any type of quality, vigilance or customer claims.

## Why?

- Complete control over the database and who can access it, unlike spreadsheets.
- Can be linked to all vigilances of SafetyEasy® Suite
- Create cases through SafetyEasy® MI in other databases accordingly.





# SafetyEasy® MI

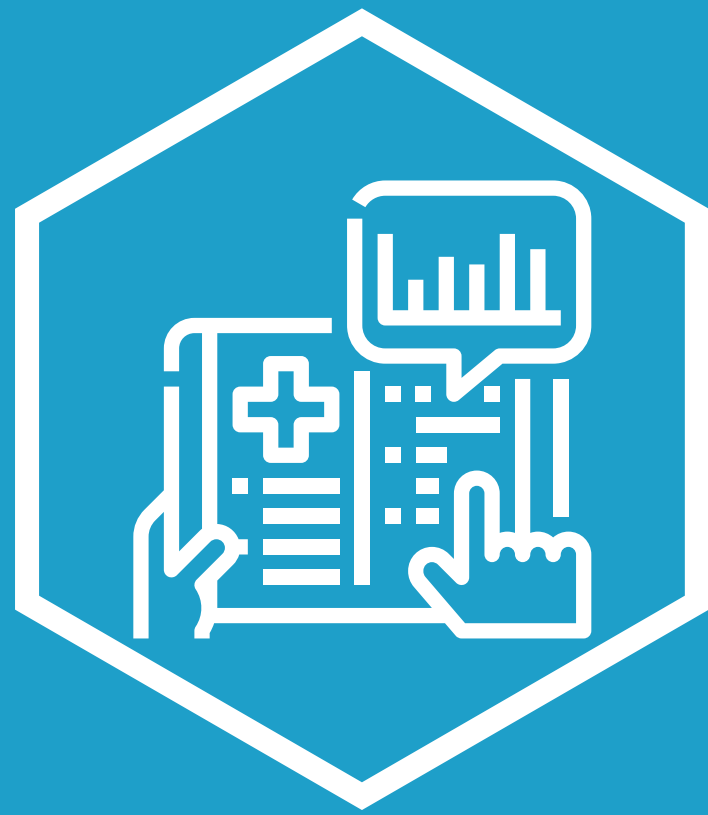
Medical Information  
Management Software



**AB-Cube**  
Making Safety Easy

## Features & Functionalities

- MedDRA Integration.
- Possibility to code a drug and a medical device
- Advanced report generation modules (spreadsheets grouped by, pivot tables...)
- Can be linked to SafetyEasy® Suite
- Check duplicate
- Audit Trail
- Administration: workflow, user management, recalls and notifications...



# SafetyEasy® MI

Medical Information  
Management Software



**AB-Cube**  
Making Safety Easy

## Happy Clients



"We recommend SafetyEasy® for 3 main reasons,

1. **User-friendly** interface and **customisation** capability,
2. Ability of SafetyEasy® to **evolve and adapt** to the latest guidelines,
3. **Support** offered by AB Cube and the **responsiveness** of their team"

*<http://www.septodontusa.com/>*



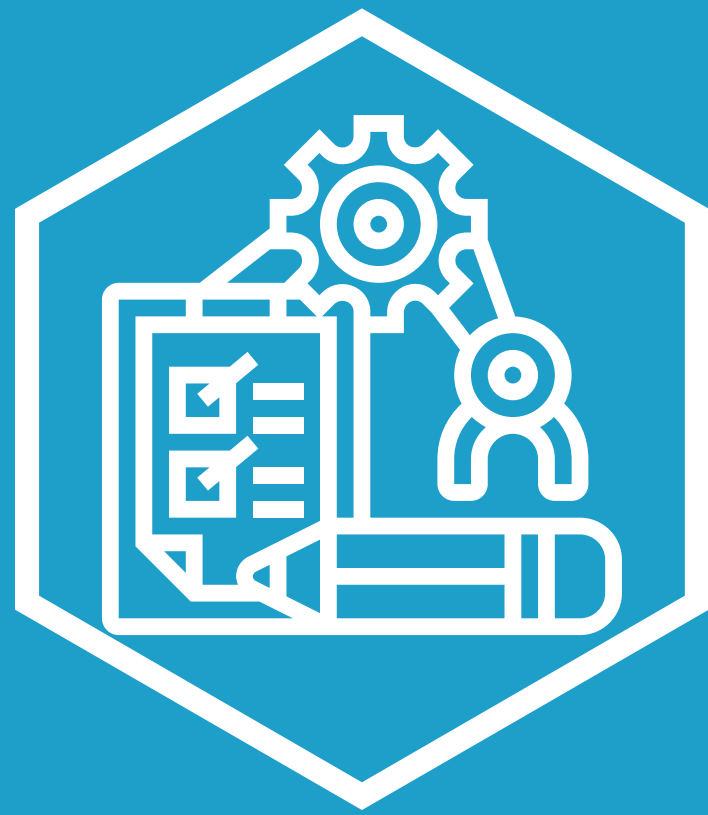
*<http://www.smbilab.be/>*



Up to 85% more efficient ICSRs activities

Be inspection ready with

**iTAP® – Triage**



## iTAP® – Triage

Customise.  
Automate.  
Track.



**AB-Cube**  
Making Safety Easy

### Triage

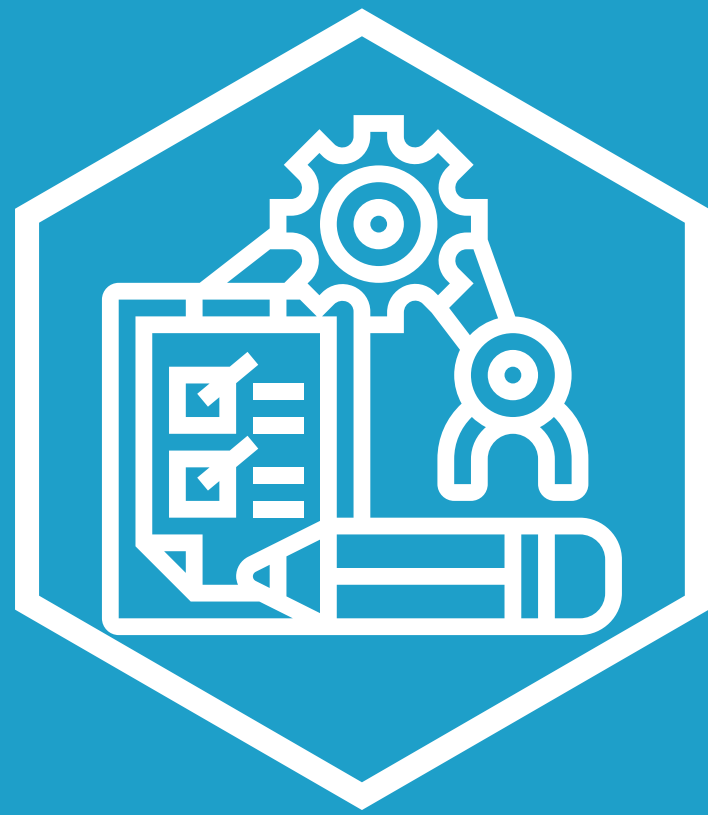
- Management of MLM / L2A / Partners' ICSRs
- Customizable filters for each product

### Assessment

- Dedicated assessment space for each company
- Automatic Assessment based on chosen filters

### Processing

- Tracking of all decisions in reports
- Integration to your safety database



## iTAP® – Triage

Customise.  
Automate.  
Track.



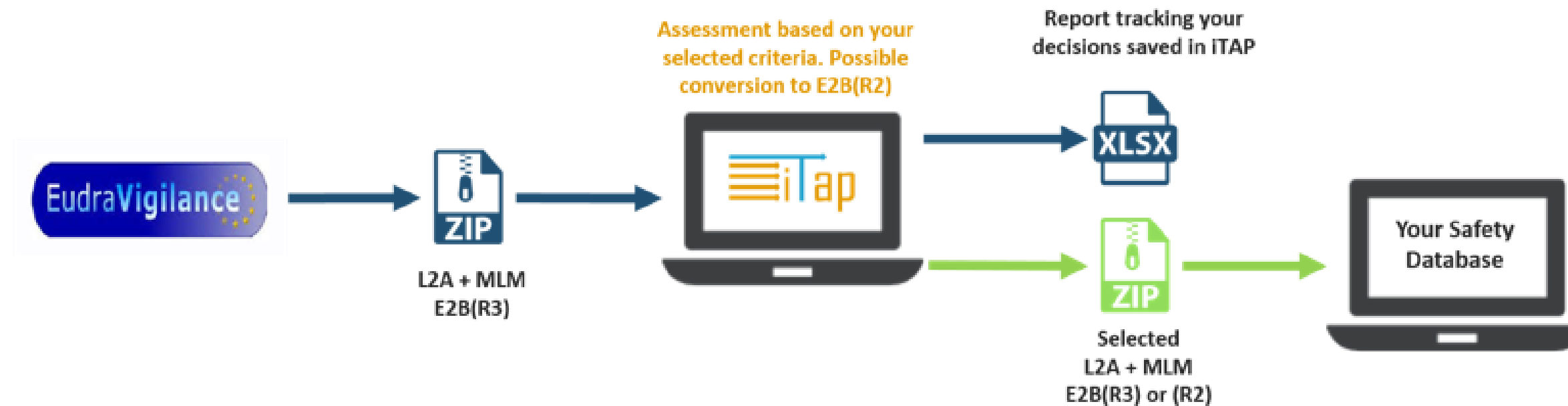
**AB-Cube**  
Making Safety Easy

### iTAP® (ICSR Triage Assessment & Processing)

- Import via batch, ICSRs will be injected in a SaaS zone (iTAP®)
- Filters can be managed by the users and/or administrators, where they have to be set up beforehand
- Possibility to filter all ICSRs' fields.
- Import of partner's cases
- Possibility to open the cases into iTAP® and check the information.
- Report is generated and available at all times in iTAP®
- Track all the decisions (imported or rejected cases), through an audit trail with the reason of the rejection.

## Multi Tenancy: One triage space per company within the same iTAP® tool

### Other safety database users:



## Single Tenancy: Integrated inside each SafetyEasy® Suite database

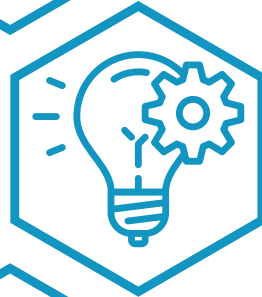
### SafetyEasy PV™ users:



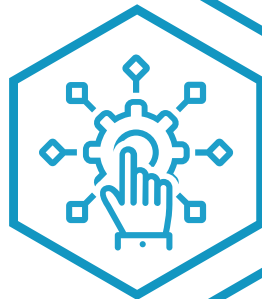
# Benefits of iTAP® – Triage



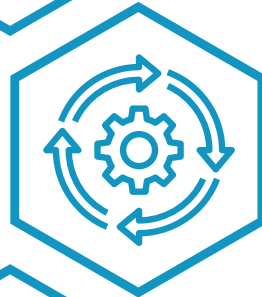
**High ROI:** Time saving through automation of activities



**Automation** prevents human mistakes



**Structuring:** Helps you structure your workflow



**Fully Reliable:** All filters are maintained by administrators



**Measures and stats:** Helps you keep record of your activity



**Fully Compliant** (FDA 21 CFR part 11, European GDPR etc.)



**Inspection Ready!** All decisions are fully tracked and saved in reports







# **SafetyEasy® Suite**

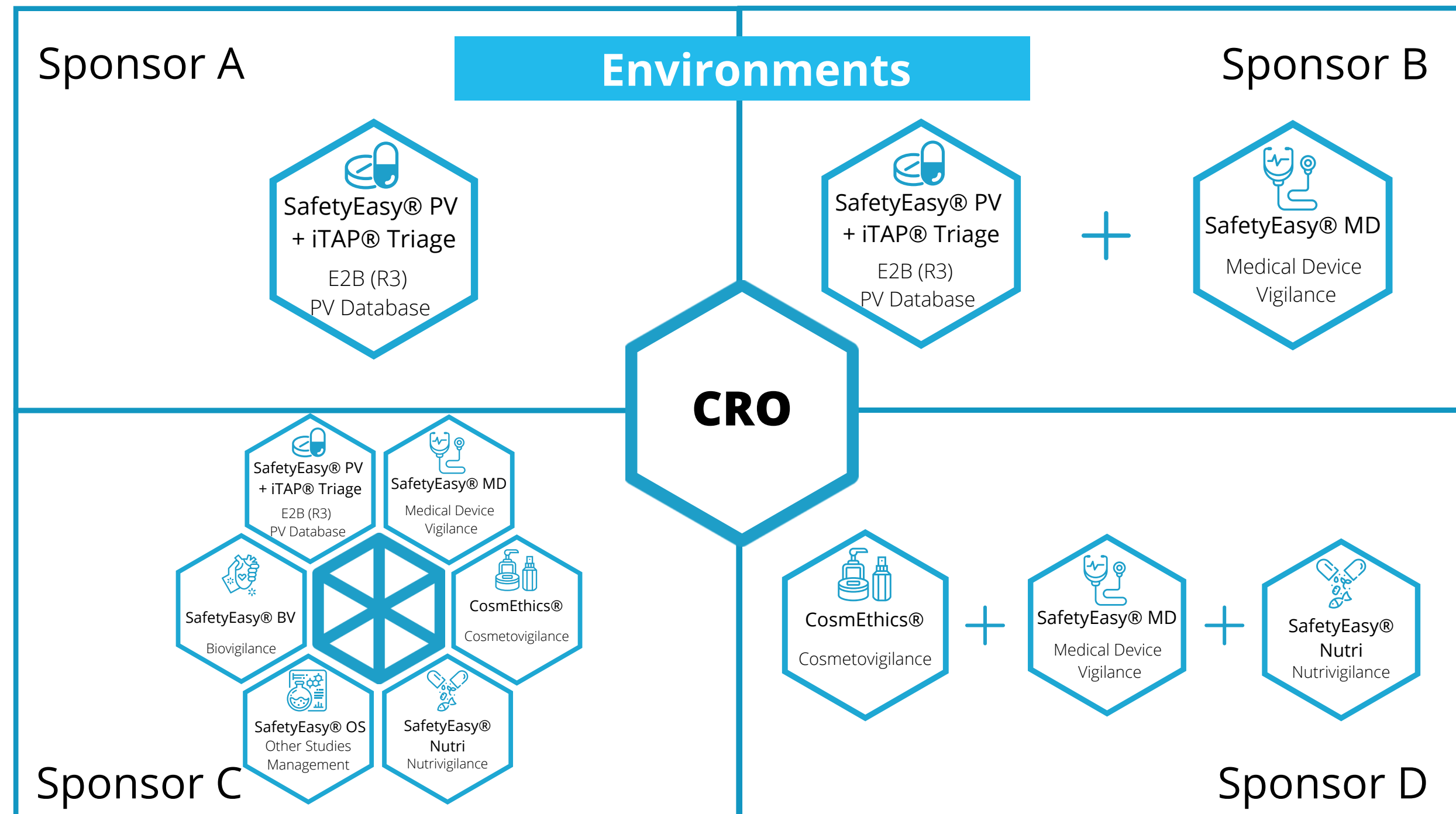
The Specialist of Choice for CROs



**AB-Cube**  
Making Safety Easy

# Single Tenancy Databases

One environment  
for each sponsor



- Adapts to your business processes with each client
- Guarantees data privacy, separation enables easy management of data for each client
- Give access of the database to your clients



## Business & Contract



**AB-Cube**  
Making Safety Easy

### High ROI: Save time & money

- Centralized administration tools
- Automated activity reports
- Gateway for easy submission of cases

### Terms and payment options designed for CROs

- Full contractual flexibility: **Can open or close database anytime**
- One implementation charge: Regardless of the number of databases



**No hidden costs**

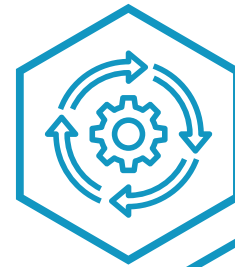
Transparent terms and conditions since Day 1



## What's included in your **Licence**



**AB-Cube**  
Making Safety Easy



All features and functionalities



Latest regulatory compliance



**Unlimited number of users**



Quarterly upgrades for no extra cost



Online access to documents



Healthcare certified hosting



Standard validation dossier



Support through tickets

Mobile : +91-9810068241  
Email : bd@thinki.in

***Thank you for your attention***

Please feel free to get in touch for any questions and clarifications.

*We're Making Safety Easy*



**AB-Cube**  
Making Safety Easy

Think i  
NOIDA ONE, 602, Tower B, Plot B8,  
Sector 62, NOIDA 201309, UP  
[www.thinki.in](http://www.thinki.in)